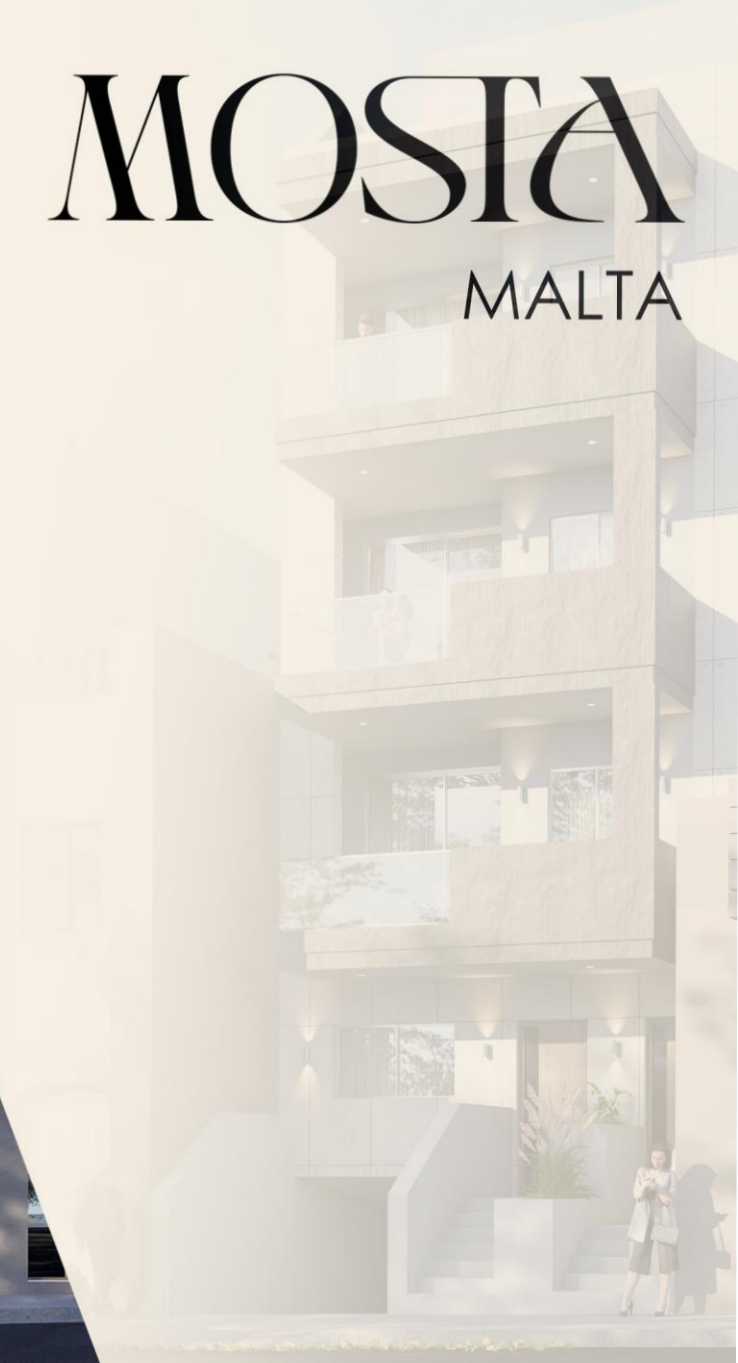


MOSTA

MALTA



An aerial photograph of a town in Malta, showing a dense cluster of buildings with light-colored roofs and some solar panels. A white location pin marker is placed in the center of the town. The surrounding area includes fields and some trees.

Site Location

Mosta, Malta

Latitude: 35.9093835
Longitude: 14.4205454

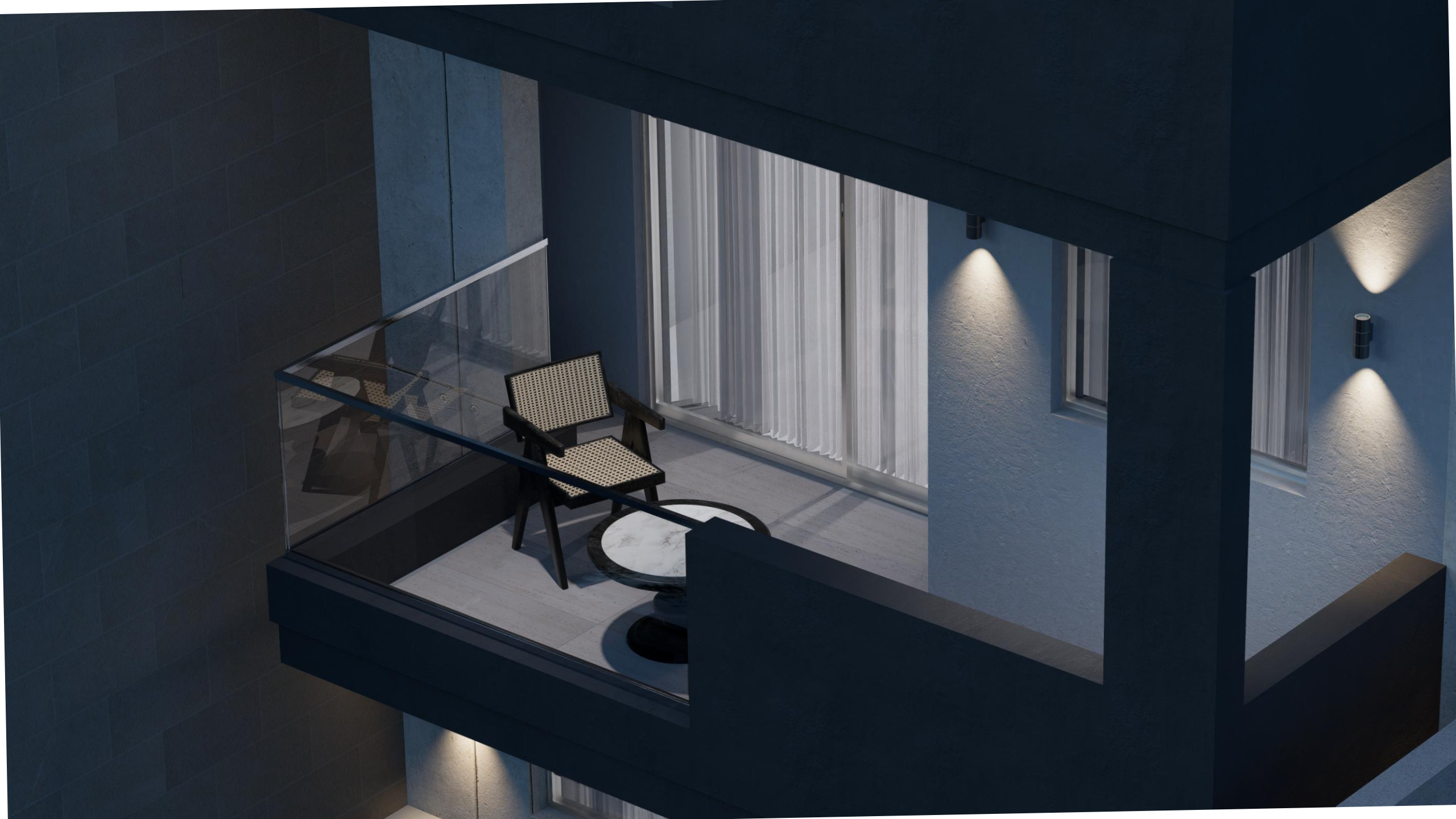














Apartment
Living Room



Apartment
Living Room



Apartment Living Room



Apartment
Dining and Kitchen



Apartment Dining and Kitchen



Apartment
Living Room



Apartment
Living Room



Apartment Living Room



Apartment
Living Room



Apartment
Bedroom



Apartment
Bedroom



Apartment
Bedroom



Bathroom



Bathroom

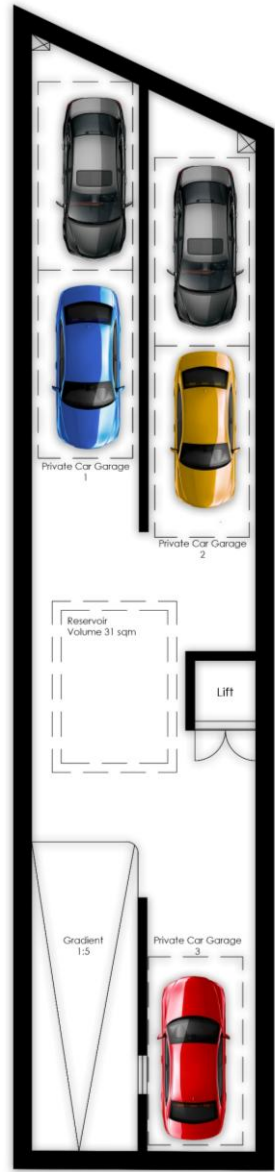




Discover refined living in the quiet and prestigious area of Triq San Gużep, Mosta. Hestine is an exclusive boutique block of just five residences, including a maisonette, three elegant apartments, and a stunning penthouse enjoying side country views.

Designed with comfort and quality in mind, the development features insulated apertures and structure, an interconnected lift, limited underlying garages, and an EPC certificate for energy efficiency.

A rare opportunity to own a luxurious home in one of Mosta's most tranquil locations.



Garage Plan



Ground Floor Plan



Typical Floor Plan



Penthouse Plan

Website

Mobile Phone

Email Address

